

# SURFACE PROFILES: P02B

## CHARACTERISTICS

Profile for surface or recessed installation with limited width.

## CAN BE USED WITH LED STRIPS WITH MAXIMUM WIDTH:

12 mm.

## MAXIMUM POWER:

20W/m

## MATERIALS

6063 aluminium profile with white PMMA screen.

## ACCESSORIES INCLUDED

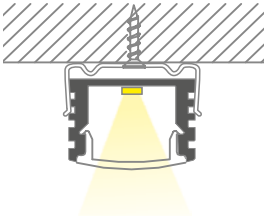
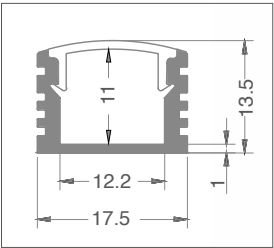
Every 3 metre bar is complete with 3 sets of end caps (with or without holes) and 3 sets of mounting clips.

## INSTALLATION

Surface or recessed. Cabling can be in line with the profile or exit the bottom of the profile.

## PACKAGE

Supplied in packages of 5 bars, each one measuring 3 meters complete with screen and accessories. Spare accessories available with separate code.



Cutting Project profiles to size\*:

fixed cost of piece work

VA04

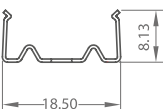
\* Includes mounting accessories.

IP20

art	Description	L1	H	L	8011905	
<b>P02B-S-PF-300</b>	profile complete with PMMA screen and accessories	17,5	13	3000	912307	1 / 5



art	Description	8011905	
<b>P02B-A-EC</b>	3+3 silver colour PC end caps	912314	1



art	Description	8011905	
<b>P02B-A-MC</b>	3 sets of metal clips	912321	1